



## HOUSE TYPE B8

Total area	463,2 m <sup>2</sup>
Garage/parking area	58,2 m <sup>2</sup>
Floor area*	405,0 m <sup>2</sup>
Usable floor area	379,8 m <sup>2</sup>
Accessible terrace floor	117,4 m <sup>2</sup>
Land**	619,0 m <sup>2</sup>
Number of parking spots	3 ×

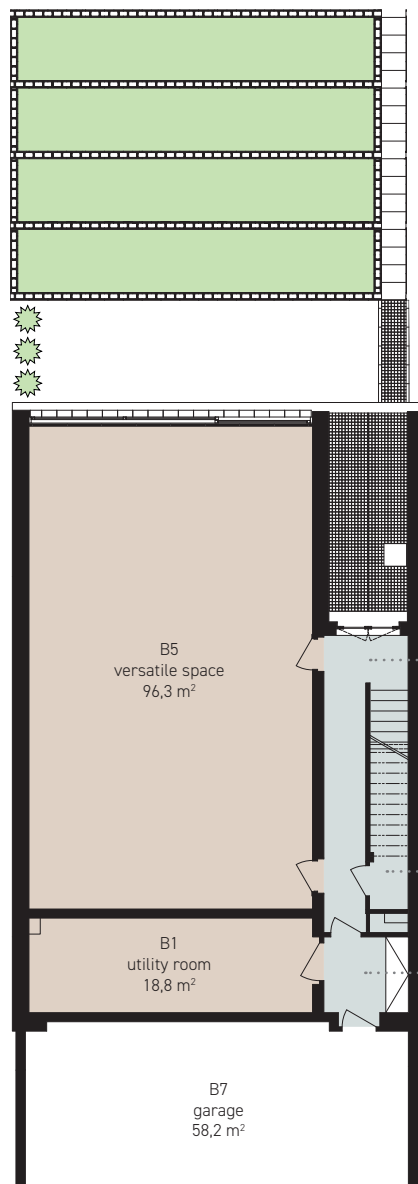
## Sunken ground floor 135,1 m<sup>2</sup>

B1 utility room	18,8 m <sup>2</sup>
B2 entryway	4,9 m <sup>2</sup>
B3 hallway	10,1 m <sup>2</sup>
B4 storeroom	5,0 m <sup>2</sup>
B5 versatile space	96,3 m <sup>2</sup>
staircase	0,0 m <sup>2</sup>

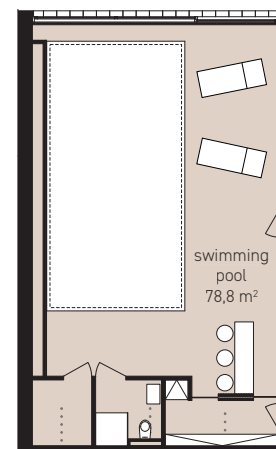
## Other areas 58,2 m<sup>2</sup>

B7 garage	58,2 m <sup>2</sup>
-----------	---------------------

## In total 193,3 m<sup>2</sup>

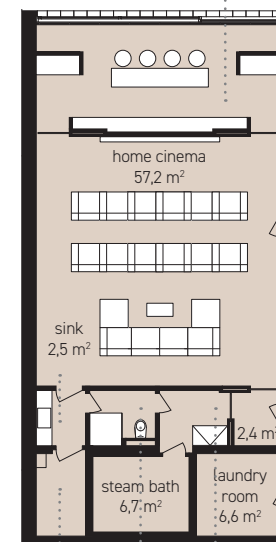


## Option swimming pool



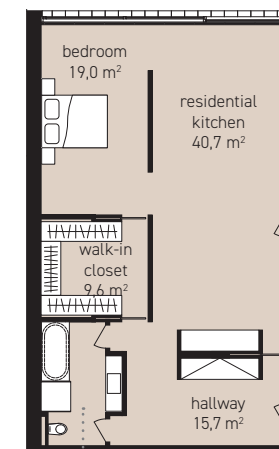
steam bath	3,3 m <sup>2</sup>
shower	3,5 m <sup>2</sup>
walk-in closet	5,2 m <sup>2</sup>

## Option cinema



utility room	3,8 m <sup>2</sup>
shower	3,1 m <sup>2</sup>
walk-in closet	3,6 m <sup>2</sup>

## Option one-room apartment



bedroom	19,0 m <sup>2</sup>
residential kitchen	40,7 m <sup>2</sup>
hallway	15,7 m <sup>2</sup>
bathroom	8,0 m <sup>2</sup>

bar, lava rock grill  
24,5 m<sup>2</sup>

\*According to the Czech Government Decree No. 366 of 2013, Article 3 \*\*Including the built-up area.

The data given here bear the character of purely preliminary information.

Any images of furnishing items in the drawings are only illustrative and will not be part of the housing unit, except such items that constitute its integral equipment.



## HOUSE TYPE B8

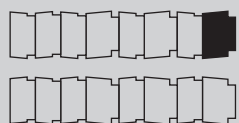
Total area	463,2 m <sup>2</sup>
Garage/parking area	58,2 m <sup>2</sup>
Floor area*	405,0 m <sup>2</sup>
Usable floor area	379,8 m <sup>2</sup>
Accessible terrace floor	117,4 m <sup>2</sup>
Land**	619,0 m <sup>2</sup>
Number of parking spots	3 ×

## Ground floor 122,8 m<sup>2</sup>

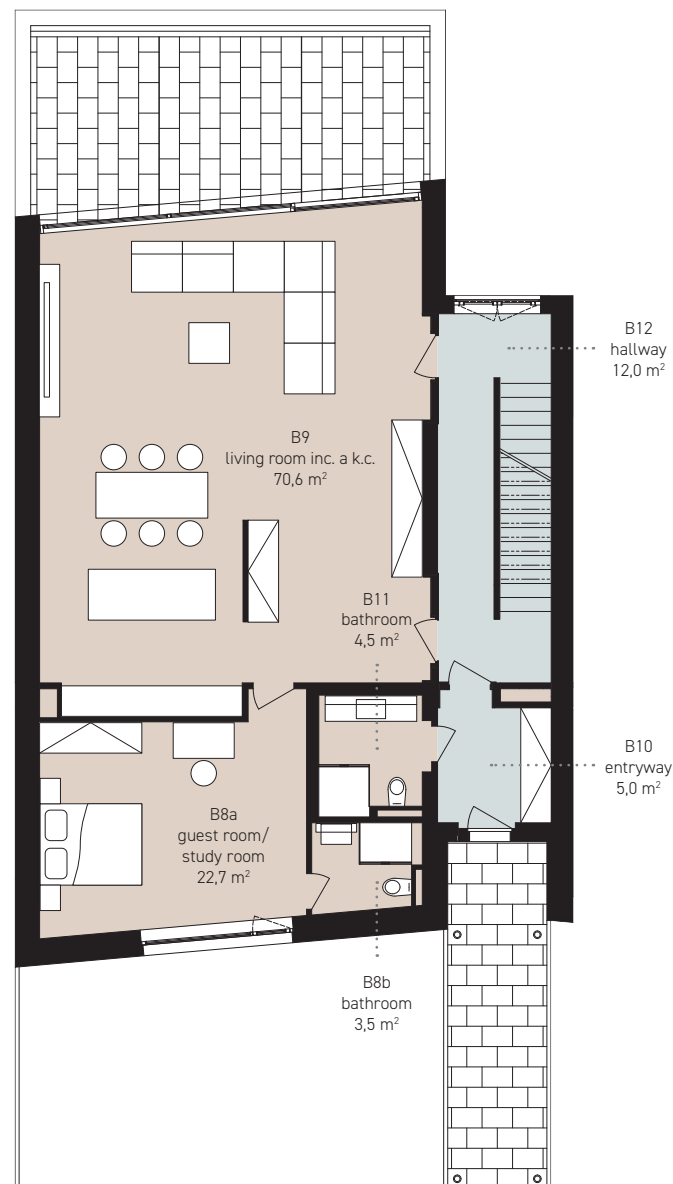
B8a guest room/ study room	22,7 m <sup>2</sup>
B8b bathroom	3,5 m <sup>2</sup>
B9 living room inc. a.k.c.	70,6 m <sup>2</sup>
B10 entryway	5,0 m <sup>2</sup>
B11 bathroom	4,5 m <sup>2</sup>
B12 hallway	12,0 m <sup>2</sup>
staircase	4,5 m <sup>2</sup>

## Other areas 28,5 m<sup>2</sup>

accessible terrace	28,5 m <sup>2</sup>
--------------------	---------------------



Ground F.  
Legend: Solid black rectangle for the unit, hatched area for the accessible terrace.



\*According to the Czech Government Decree No. 366 of 2013, Article 3 \*\*Including the built-up area.

The data given here bear the character of purely preliminary information.

Any images of furnishing items in the drawings are only illustrative and will not be part of the housing unit, except such items that constitute its integral equipment.

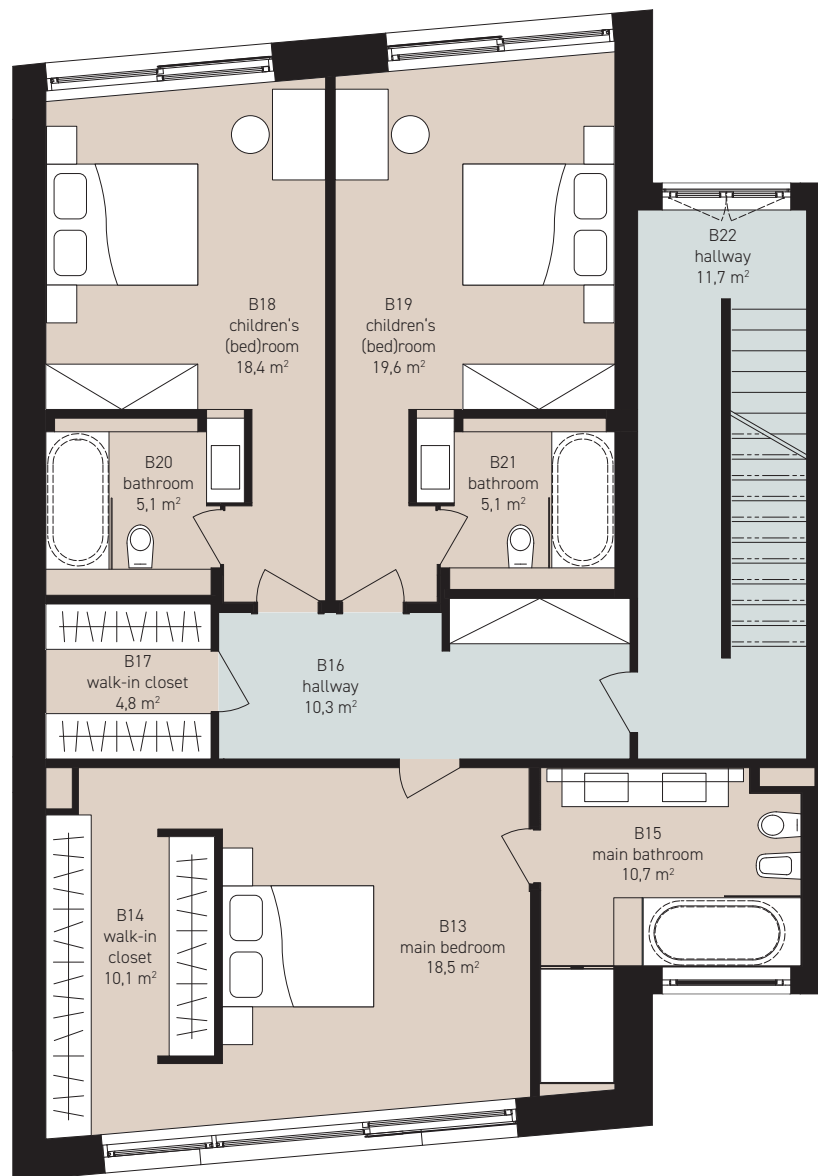
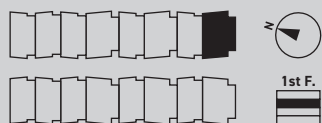


## HOUSE TYPE B8

Total area	463,2 m <sup>2</sup>
Garage/parking area	58,2 m <sup>2</sup>
Floor area*	405,0 m <sup>2</sup>
Usable floor area	379,8 m <sup>2</sup>
Accessible terrace floor	117,4 m <sup>2</sup>
Land**	619,0 m <sup>2</sup>
Number of parking spots	3 ×

## 1st floor / first floor 114,3 m<sup>2</sup>

B13 main bedroom	18,5 m <sup>2</sup>
B14 walk-in closet	10,1 m <sup>2</sup>
B15 main bathroom	10,7 m <sup>2</sup>
B16 hallway	10,3 m <sup>2</sup>
B17 walk-in closet	4,8 m <sup>2</sup>
B18 children's (bed)room	18,4 m <sup>2</sup>
B19 children's (bed)room	19,6 m <sup>2</sup>
B20 bathroom	5,1 m <sup>2</sup>
B21 bathroom	5,1 m <sup>2</sup>
B22 hallway	11,7 m <sup>2</sup>
staircase	0,0 m <sup>2</sup>



\*According to the Czech Government Decree No. 366 of 2013, Article 3 \*\*Including the built-up area.

The data given here bear the character of purely preliminary information.

Any images of furnishing items in the drawings are only illustrative and will not be part of the housing unit, except such items that constitute its integral equipment.

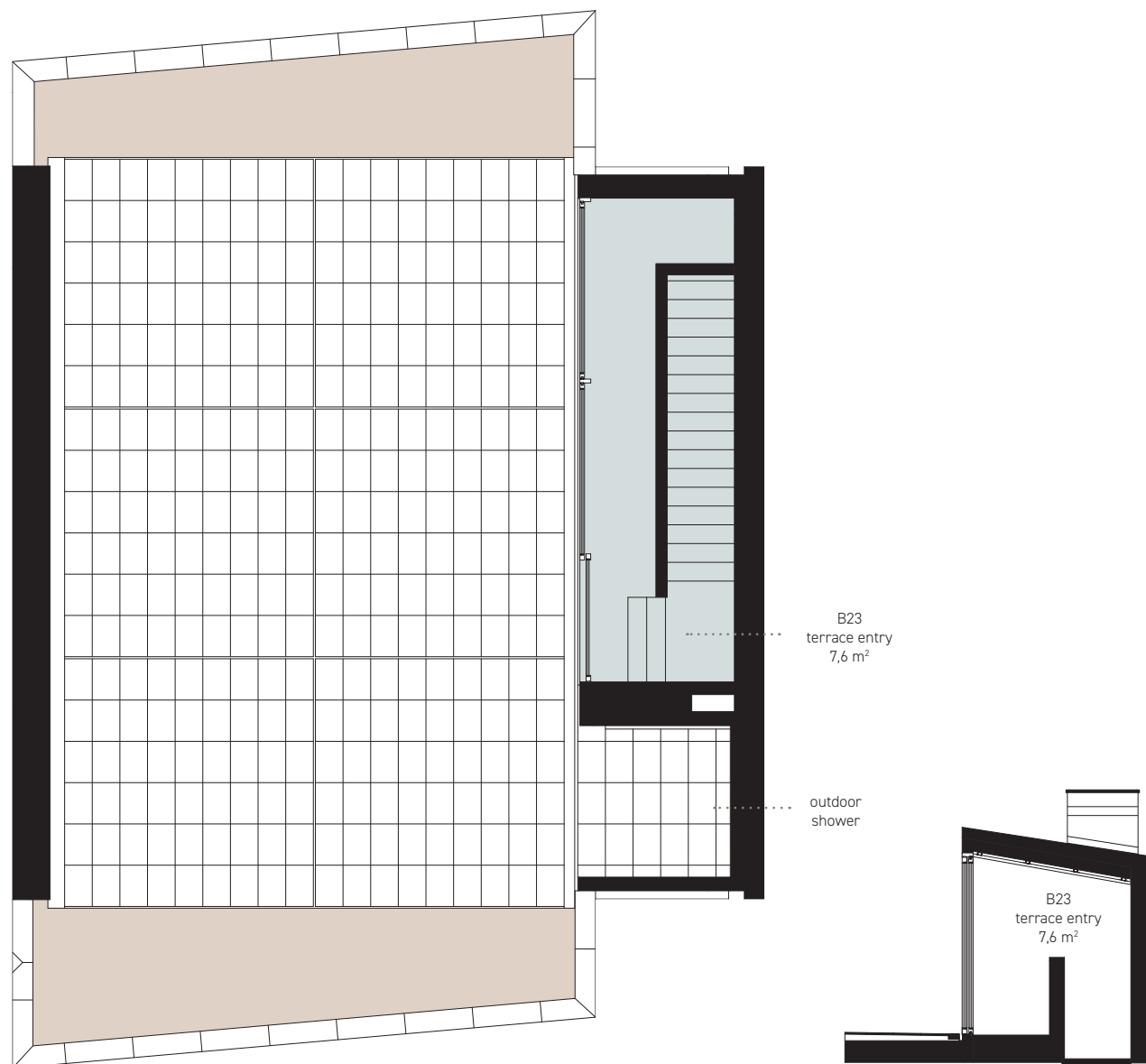
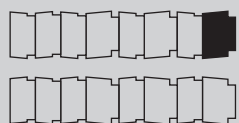


## HOUSE TYPE B8

Total area	463,2 m <sup>2</sup>
Garage/parking area	58,2 m <sup>2</sup>
Floor area*	405,0 m <sup>2</sup>
Usable floor area	379,8 m <sup>2</sup>
Accessible terrace floor	117,4 m <sup>2</sup>
Land**	619,0 m <sup>2</sup>
Number of parking spots	3 ×

### 2nd floor

B23 terrace entry	7,6 m <sup>2</sup>
accessible terrace	84,0 m <sup>2</sup>
terasa outdoor shower	4,9 m <sup>2</sup>
terrace pebble stone (kačírek)	27,5 m <sup>2</sup>
staircase	0,0 m <sup>2</sup>



\*According to the Czech Government Decree No. 366 of 2013, Article 3 \*\*Including the built-up area.

The data given here bear the character of purely preliminary information.

Any images of furnishing items in the drawings are only illustrative and will not be part of the housing unit, except such items that constitute its integral equipment.