



HOUSE TYPE A2

Total area	347,1 m ²
Garage/parking area	42,8 m ²
Floor area*	304,3 m ²
Usable floor area	285,3 m ²
Accessible terrace floor	73,9 m ²
Land**	259,0 m ²
Number of parking spots	2 ×

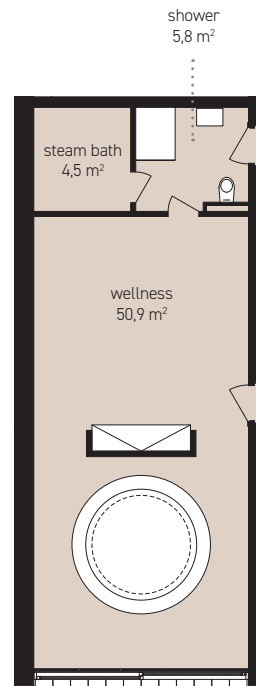
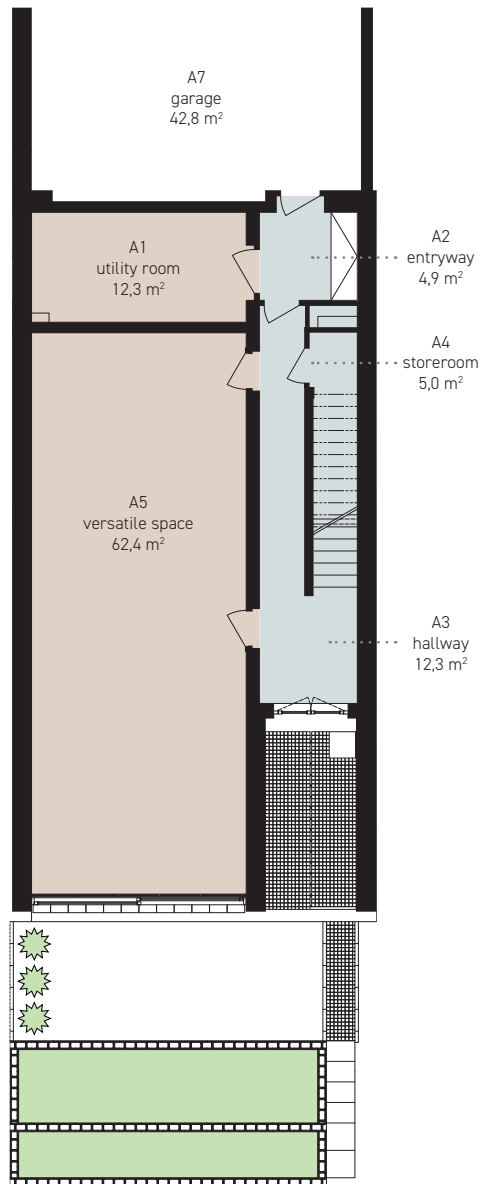
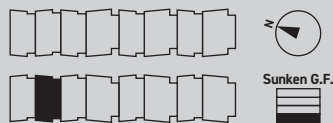
Sunken ground floor 96,9 m²

A1 utility room	12,3 m ²
A2 entryway	4,9 m ²
A3 hallway	12,3 m ²
A4 storeroom	5,0 m ²
A5 versatile space	62,4 m ²
staircase	0,0 m ²

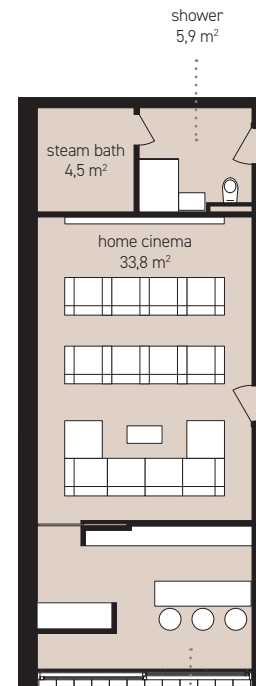
Other areas 42,8 m²

A7 garage	42,8 m ²
-----------	---------------------

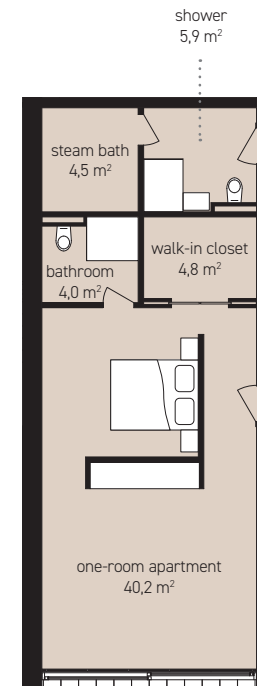
In total 139,7 m²



Option whirlpool and fitness



Option cinema



Option one-room apartment

*According to the Czech Government Decree No. 366 of 2013, Article 3. **Including the built-up area and the land that is to become part of the land plot No. 874/7. The data given here bear the character of purely preliminary information. Any images of furnishing items in the drawings are only illustrative and will not be part of the housing unit, except such items that constitute its integral equipment.



HOUSE TYPE A2

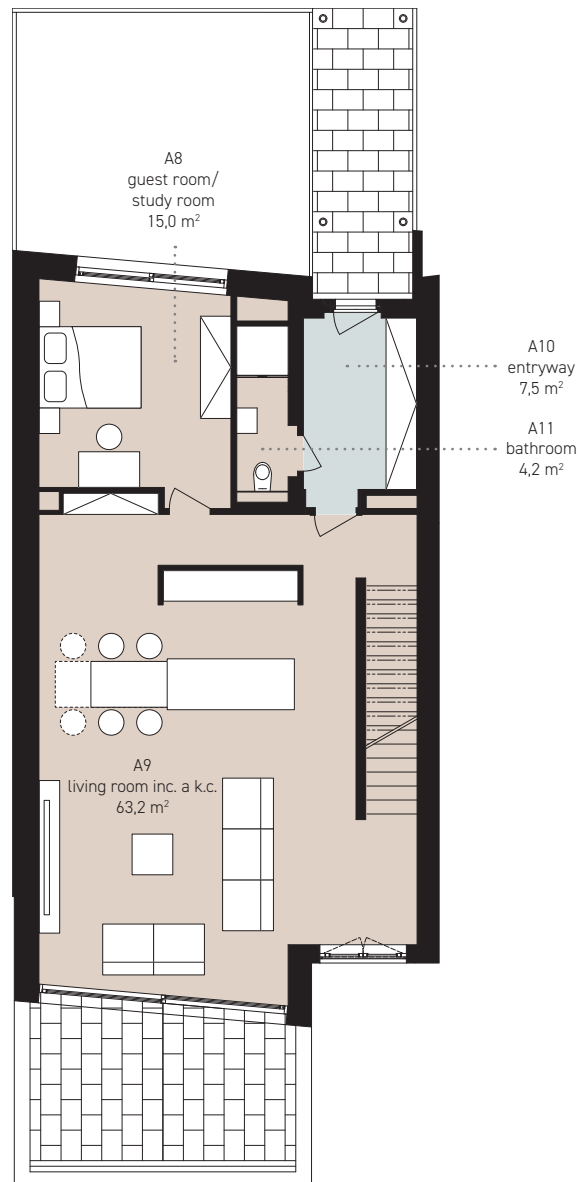
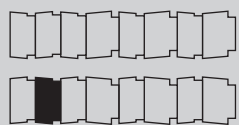
Total area	347,1 m ²
Garage/parking area	42,8 m ²
Floor area*	304,3 m ²
Usable floor area	285,3 m ²
Accessible terrace floor	73,9 m ²
Land**	259,0 m ²
Number of parking spots	2 ×

Ground floor 89,9 m²

A8 guest room/ study room	15,0 m ²
A9 living room inc. a k.c.	63,2 m ²
A10 entryway	7,5 m ²
A11 bathroom	4,2 m ²
staircase	0,0 m ²

Other areas 20,1 m²

accessible terrace	20,1 m ²
--------------------	---------------------



*According to the Czech Government Decree No. 366 of 2013, Article 3. **Including the built-up area and the land that is to become part of the land plot No. 874/7.

The data given here bear the character of purely preliminary information. Any images of furnishing items in the drawings are only illustrative and will not be part of the housing unit, except such items that constitute its integral equipment.

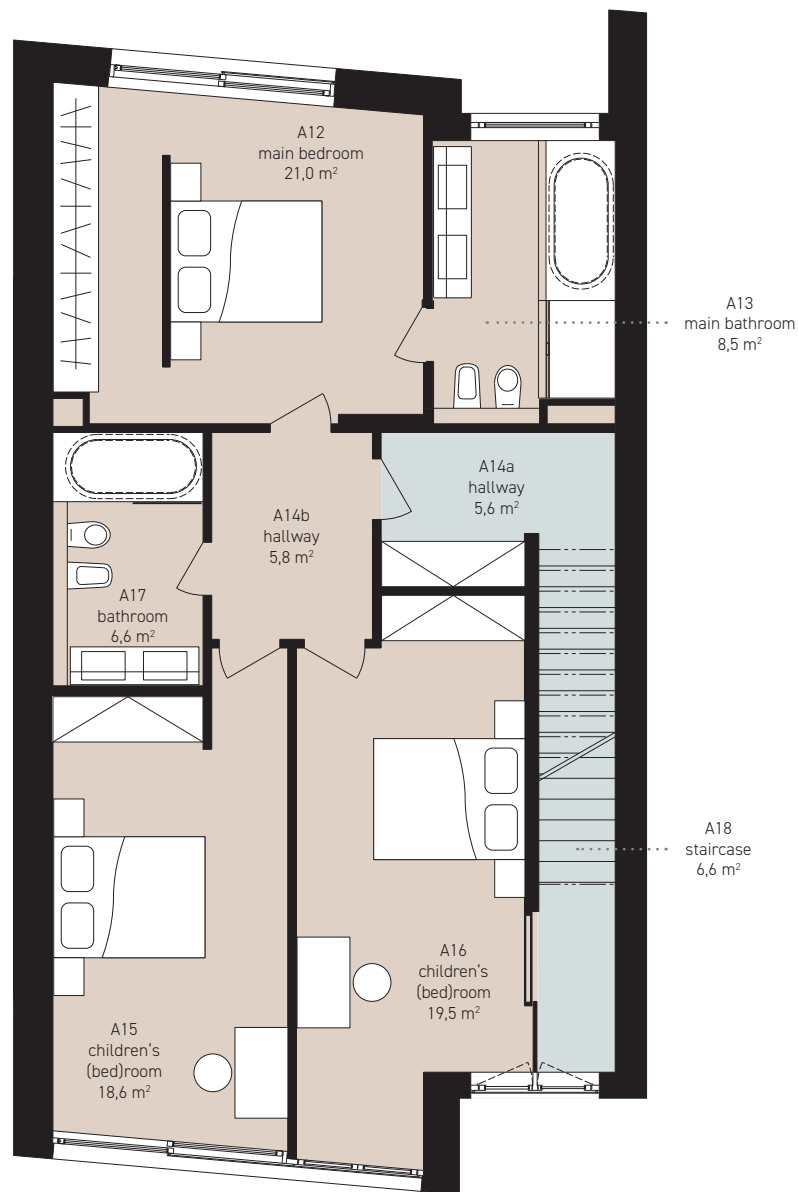
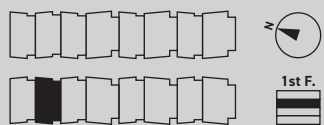


HOUSE TYPE **A2**

Total area	347,1 m ²
Garage/parking area	42,8 m ²
Floor area*	304,3 m ²
Usable floor area	285,3 m ²
Accessible terrace floor	73,9 m ²
Land**	259,0 m ²
Number of parking spots	2 ×

1st floor / first floor **92,2 m²**

A12 main bedroom	21,0 m ²
A13 main bathroom	8,5 m ²
A14a hallway	5,6 m ²
A14b hallway	5,8 m ²
A15 children's (bed)room	18,6 m ²
A16 children's (bed)room	19,5 m ²
A17 bathroom	6,6 m ²
A18 staircase	6,6 m ²



*According to the Czech Government Decree No. 366 of 2013, Article 3. **Including the built-up area and the land that is to become part of the land plot No. 874/7.

The data given here bear the character of purely preliminary information. Any images of furnishing items in the drawings are only illustrative and will not be part of the housing unit, except such items that constitute its integral equipment.

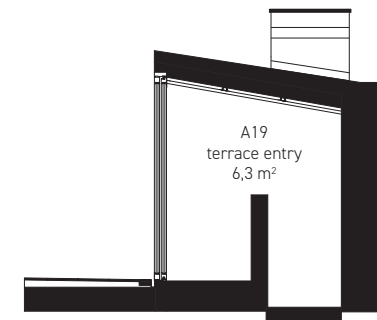
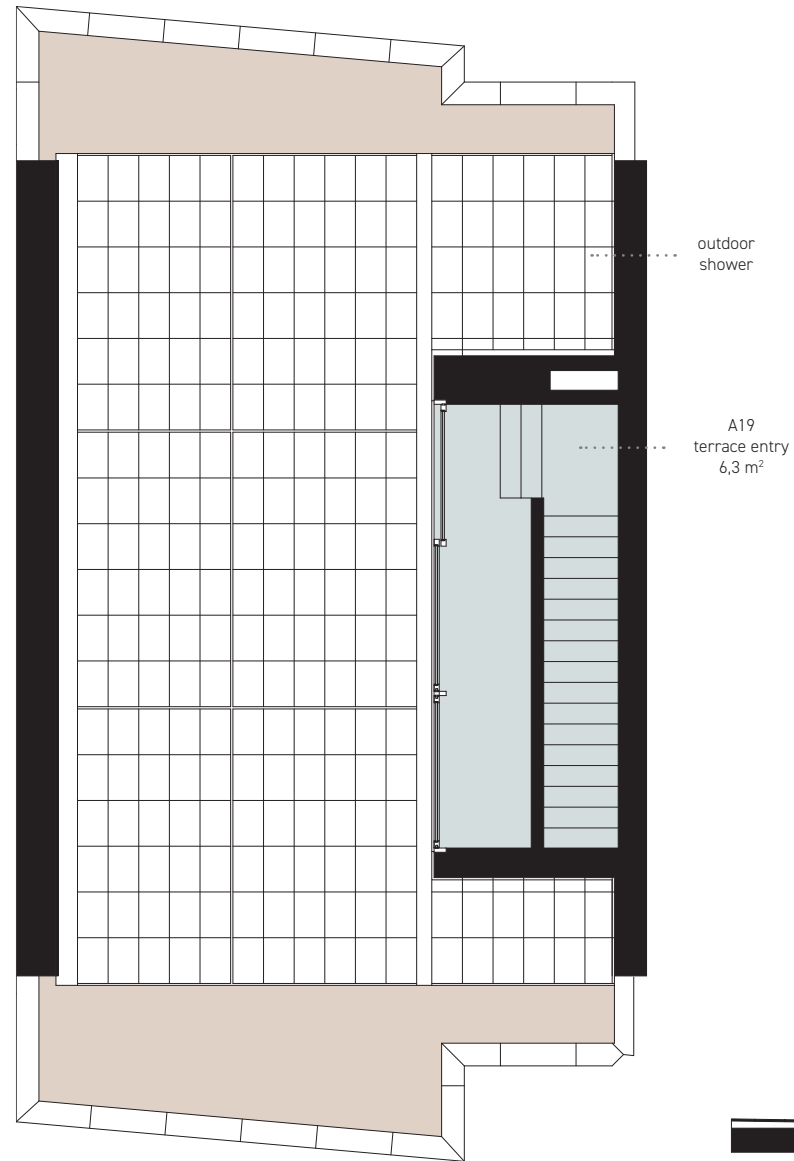
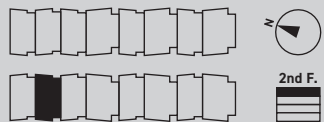


HOUSE TYPE **A2**

Total area	347,1 m ²
Garage/parking area	42,8 m ²
Floor area*	304,3 m ²
Usable floor area	285,3 m ²
Accessible terrace floor	73,9 m ²
Land**	259,0 m ²
Number of parking spots	2 ×

2nd floor

A19 terrace entry	6,3 m ²
accessible terrace including outdoor shower	53,8 m ²
terrace pebble stone (kačírek)	20,6 m ²
staircase	0,0 m ²



*According to the Czech Government Decree No. 366 of 2013, Article 3. **Including the built-up area and the land that is to become part of the land plot No. 874/7. The data given here bear the character of purely preliminary information. Any images of furnishing items in the drawings are only illustrative and will not be part of the housing unit, except such items that constitute its integral equipment.