



HOUSE TYPE A8

Total area	463,2 m ²
Garage/parking area	58,2 m ²
Floor area*	405,0 m ²
Usable floor area	379,8 m ²
Accessible terrace floor	117,4 m ²
Land**	547,0 m ²
Number of parking spots	3 ×

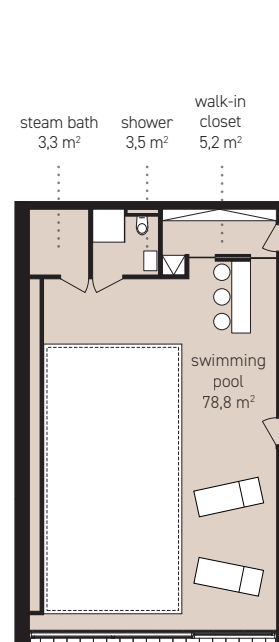
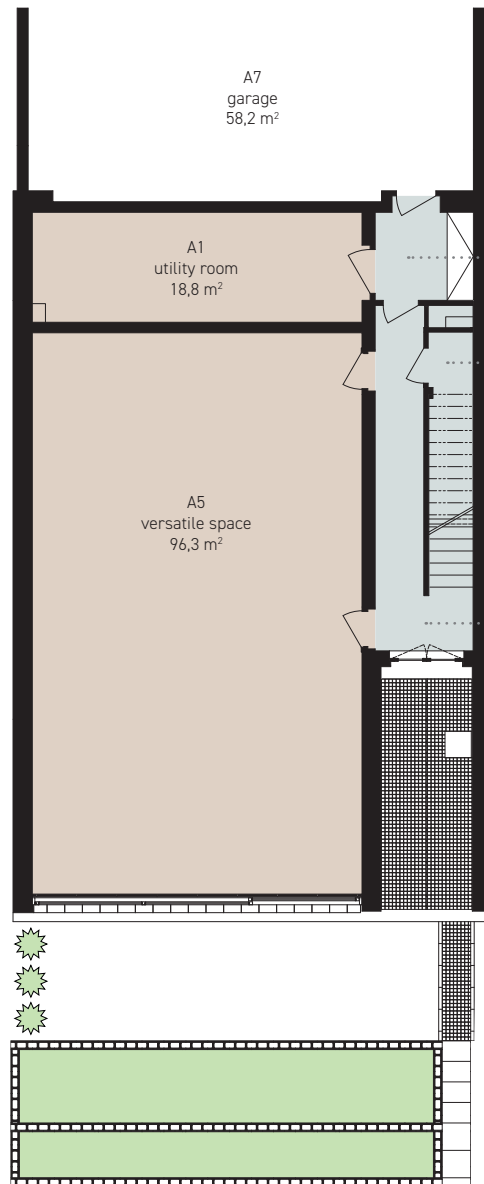
Sunken ground floor 135,1 m²

A1 utility room	18,8 m ²
A2 entryway	4,9 m ²
A3 hallway	10,1 m ²
A4 storeroom	5,0 m ²
A5 versatile space	96,3 m ²
staircase	0,0 m ²

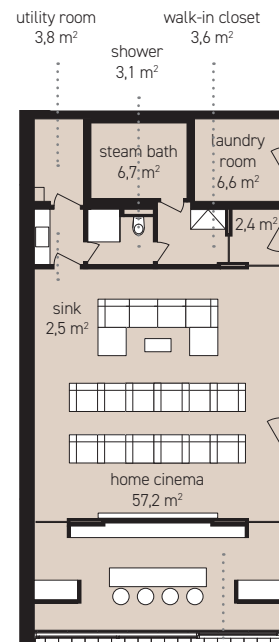
Other areas 58,2 m²

A7 garage	58,2 m ²
-----------	---------------------

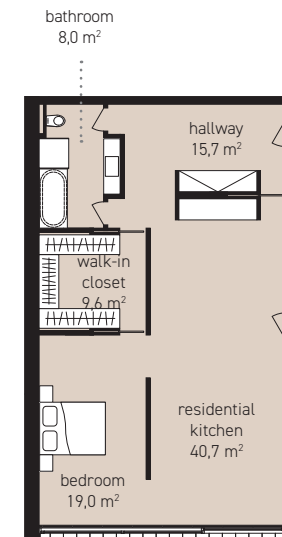
In total 193,3 m²



Option swimming pool



Option cinema



Option one-room apartment

bar, lava rock grill
24,5 m²

*According to the Czech Government Decree No. 366 of 2013, Article 3. **Including the built-up area and the land that is to become part of the land plot No. 874/7.

The data given here bear the character of purely preliminary information.

Any images of furnishing items in the drawings are only illustrative and will not be part of the housing unit, except such items that constitute its integral equipment.

CITADELA16

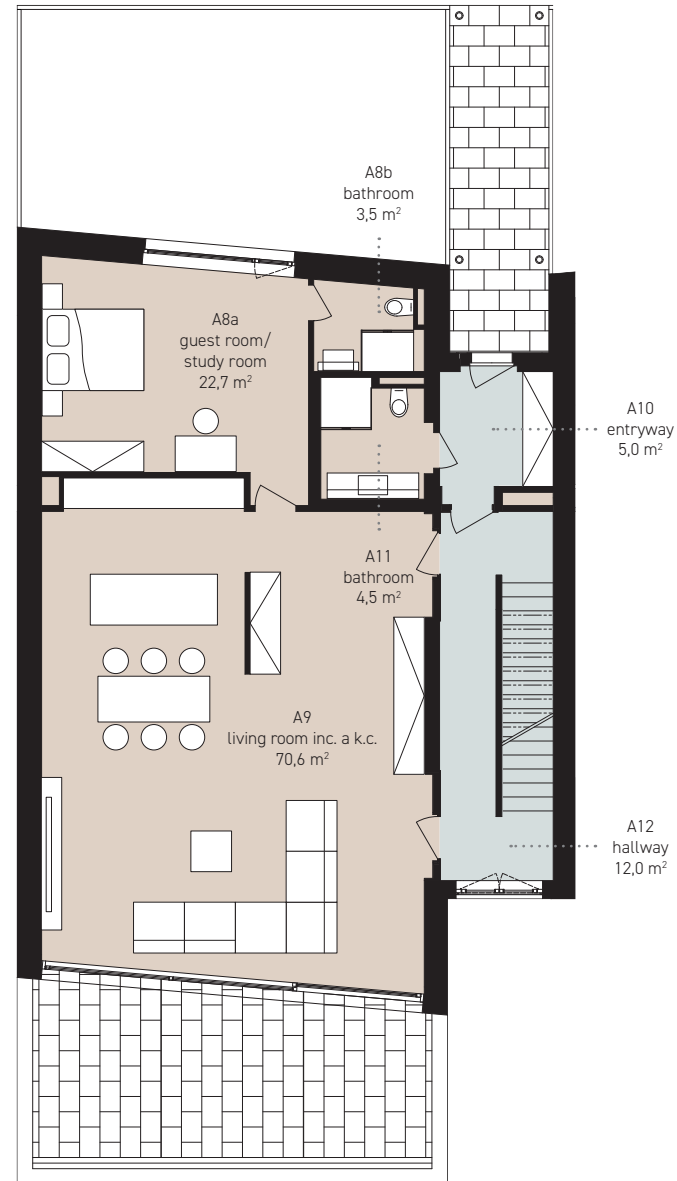
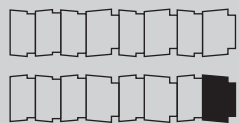


HOUSE TYPE **A8**

Total area	463,2 m ²
Garage/parking area	58,2 m ²
Floor area*	405,0 m ²
Usable floor area	379,8 m ²
Accessible terrace floor	117,4 m ²
Land**	547,0 m ²
Number of parking spots	3 ×

Ground floor **122,8 m²**

A8a guest room/ study room	22,7 m ²
A8b bathroom	3,5 m ²
A9 living room inc. a k.c.	70,6 m ²
A10 entryway	5,0 m ²
A11 bathroom	4,5 m ²
A12 hallway	12,0 m ²
staircase	4,5 m ²
Other areas	28,5 m²
accessible terrace	28,5 m ²



*According to the Czech Government Decree No. 366 of 2013, Article 3. **Including the built-up area and the land that is to become part of the land plot No. 874/7.

The data given here bear the character of purely preliminary information. Any images of furnishing items in the drawings are only illustrative and will not be part of the housing unit, except such items that constitute its integral equipment.

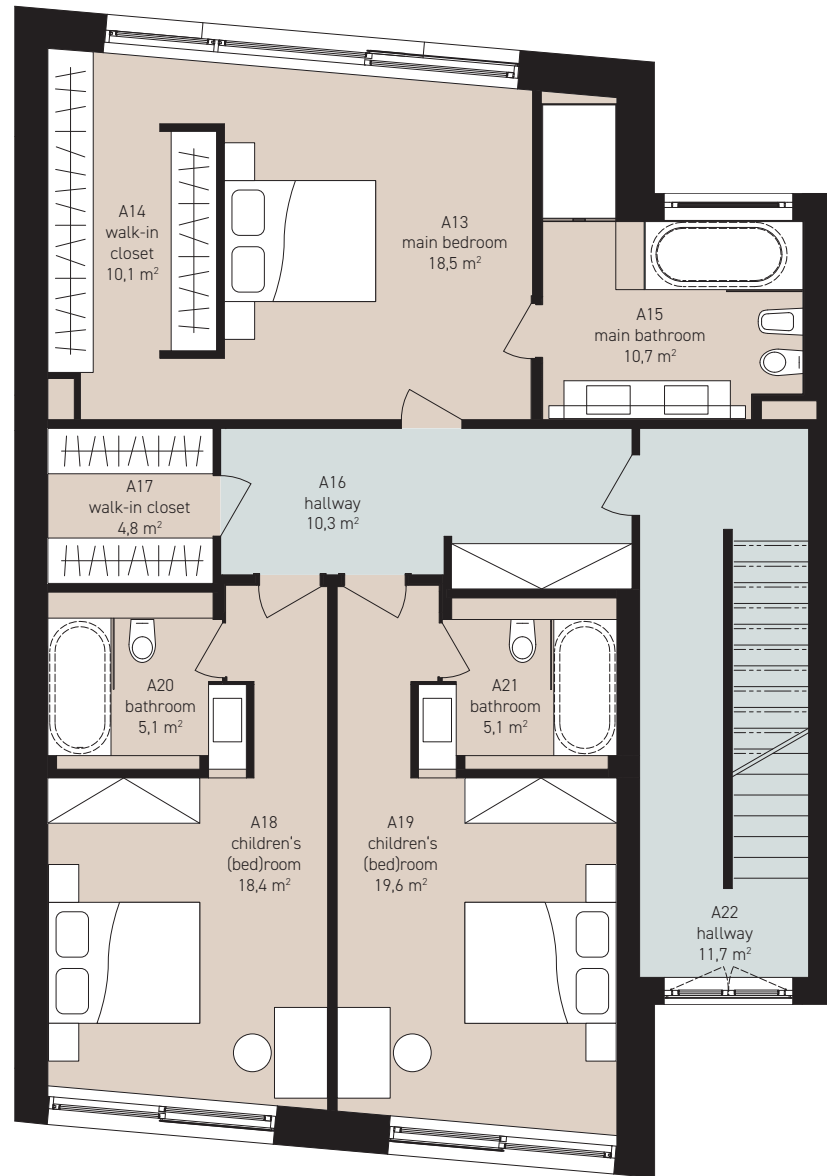
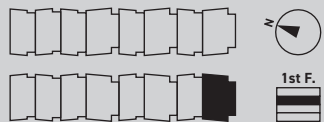


HOUSE TYPE A8

Total area	463,2 m ²
Garage/parking area	58,2 m ²
Floor area*	405,0 m ²
Usable floor area	379,8 m ²
Accessible terrace floor	117,4 m ²
Land**	547,0 m ²
Number of parking spots	3 ×

1st floor / first floor 114,3 m²

A13 main bedroom	18,5 m ²
A14 walk-in closet	10,1 m ²
A15 main bathroom	10,7 m ²
A16 hallway	10,3 m ²
A17 walk-in closet	4,8 m ²
A18 children's (bed)room	18,4 m ²
A19 children's (bed)room	19,6 m ²
A20 bathroom	5,1 m ²
A21 bathroom	5,1 m ²
A22 hallway	11,7 m ²
staircase	0,0 m ²



*According to the Czech Government Decree No. 366 of 2013, Article 3. **Including the built-up area and the land that is to become part of the land plot No. 874/7.

The data given here bear the character of purely preliminary information. Any images of furnishing items in the drawings are only illustrative and will not be part of the housing unit, except such items that constitute its integral equipment.

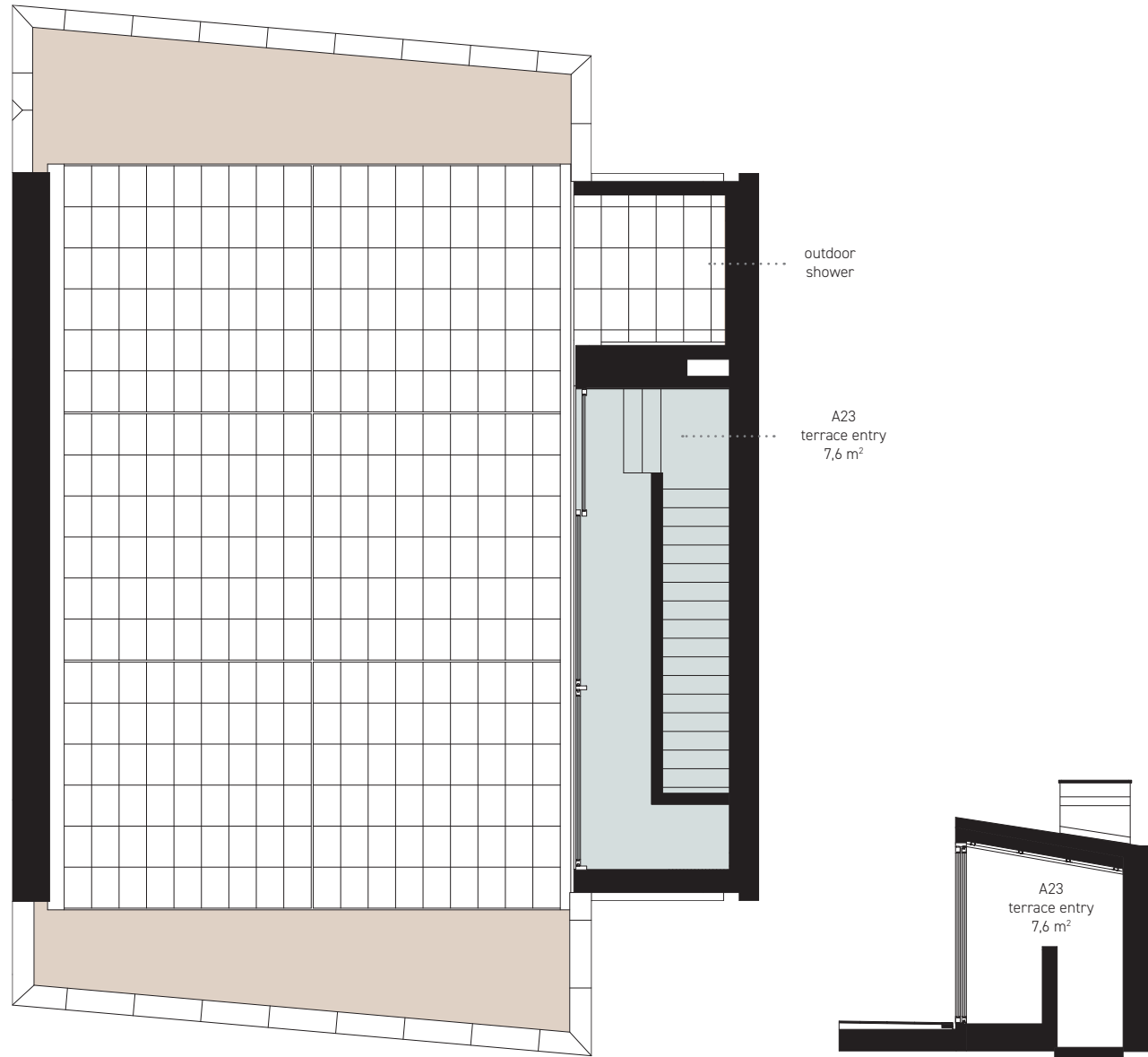
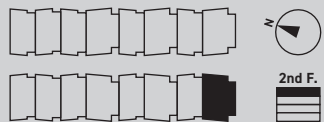


HOUSE TYPE **A8**

Total area	463,2 m ²
Garage/parking area	58,2 m ²
Floor area*	405,0 m ²
Usable floor area	379,8 m ²
Accessible terrace floor	117,4 m ²
Land**	547,0 m ²
Number of parking spots	3 ×

2nd floor

A23 terrace entry	7,6 m ²
accessible terrace	84,0 m ²
terasa outdoor shower	4,9 m ²
terrace pebble stone (kačírtek)	27,5 m ²
staircase	0,0 m ²



*According to the Czech Government Decree No. 366 of 2013, Article 3. **Including the built-up area and the land that is to become part of the land plot No. 874/7. The data given here bear the character of purely preliminary information.

Any images of furnishing items in the drawings are only illustrative and will not be part of the housing unit, except such items that constitute its integral equipment.