



HOUSE TYPE B1

Total area	347,1 m ²
Garage/parking area	42,8 m ²
Floor area*	304,3 m ²
Usable floor area	285,3 m ²
Accessible terrace floor	73,9 m ²
Land**	275,0 m ²
Number of parking spots	2 ×

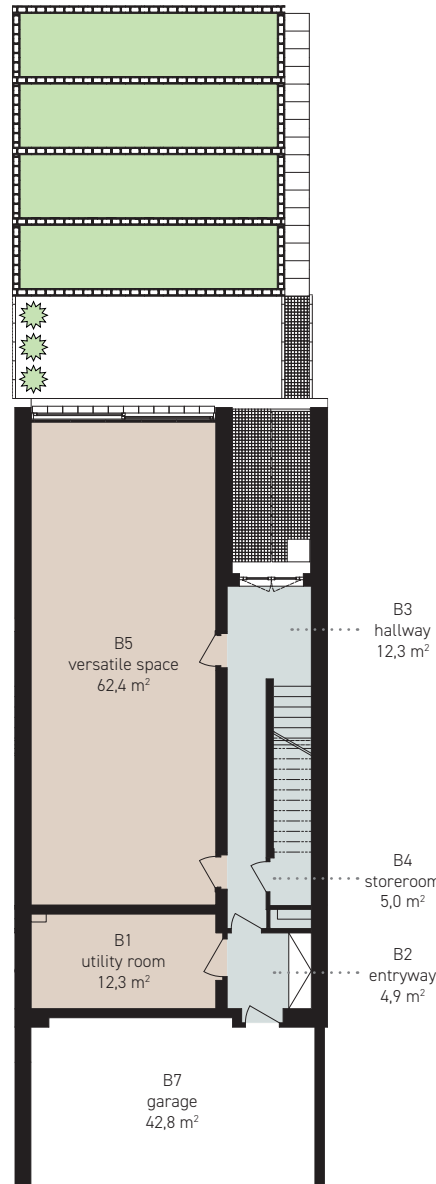
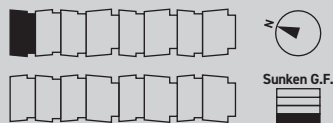
Sunken ground floor 96,9 m²

B1 utility room	12,3 m ²
B2 entryway	4,9 m ²
B3 hallway	12,3 m ²
B4 storeroom	5,0 m ²
B5 versatile space	62,4 m ²
staircase	0,0 m ²

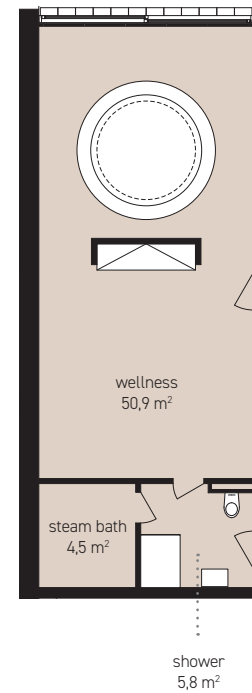
Other areas 42,8 m²

B7 garage	42,8 m ²
-----------	---------------------

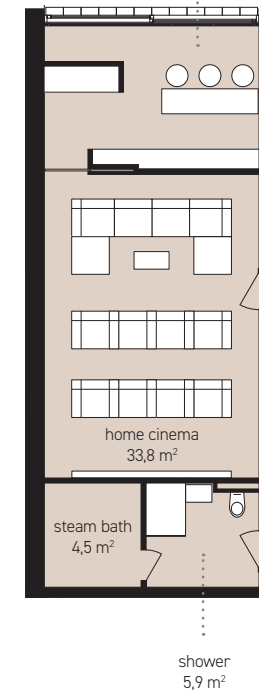
In total 139,7 m²



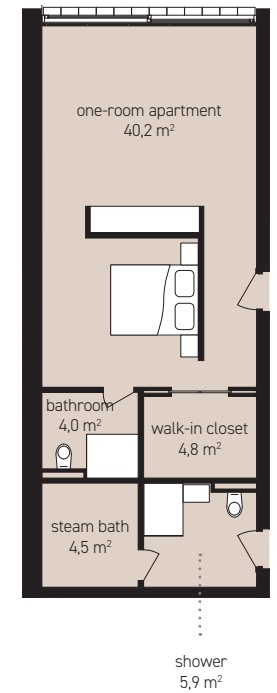
Option whirlpool and fitness



Option cinema



Option one-room apartment

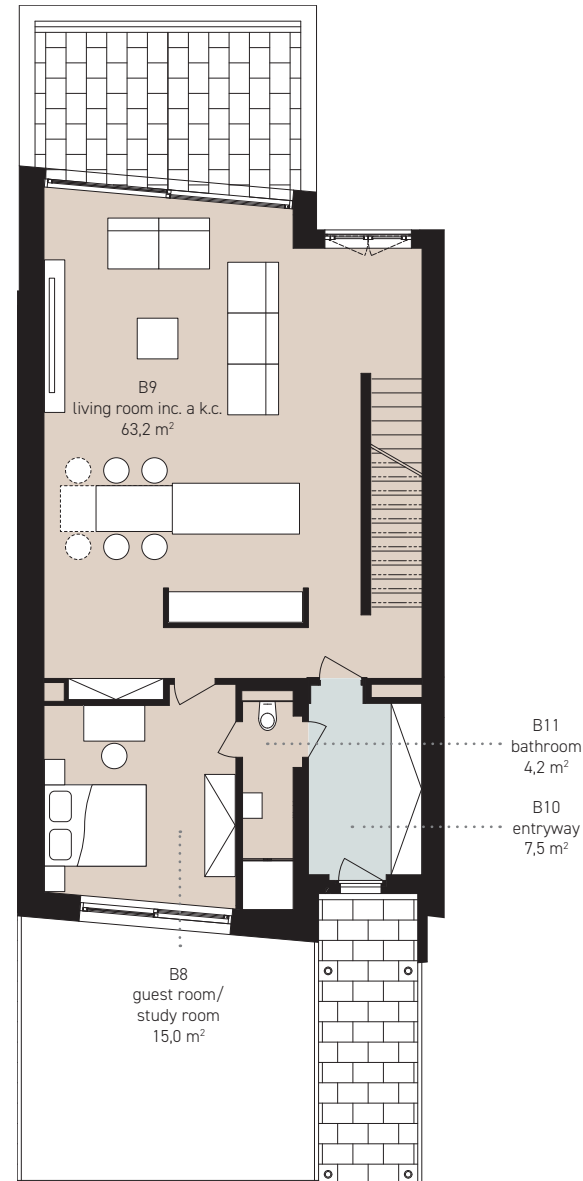
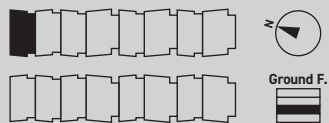


CITADELA16



HOUSE TYPE	B1
Total area	347,1 m ²
Garage/parking area	42,8 m ²
Floor area*	304,3 m ²
Usable floor area	285,3 m ²
Accessible terrace floor	73,9 m ²
Land**	275,0 m ²
Number of parking spots	2 ×

Ground floor	89,9 m ²
B8 guest room/ study room	15,0 m ²
B9 living room inc. a k.c.	63,2 m ²
B10 entryway	7,5 m ²
B11 bathroom	4,2 m ²
staircase	0,0 m ²
Other areas	20,1 m ²
accessible terrace	20,1 m ²



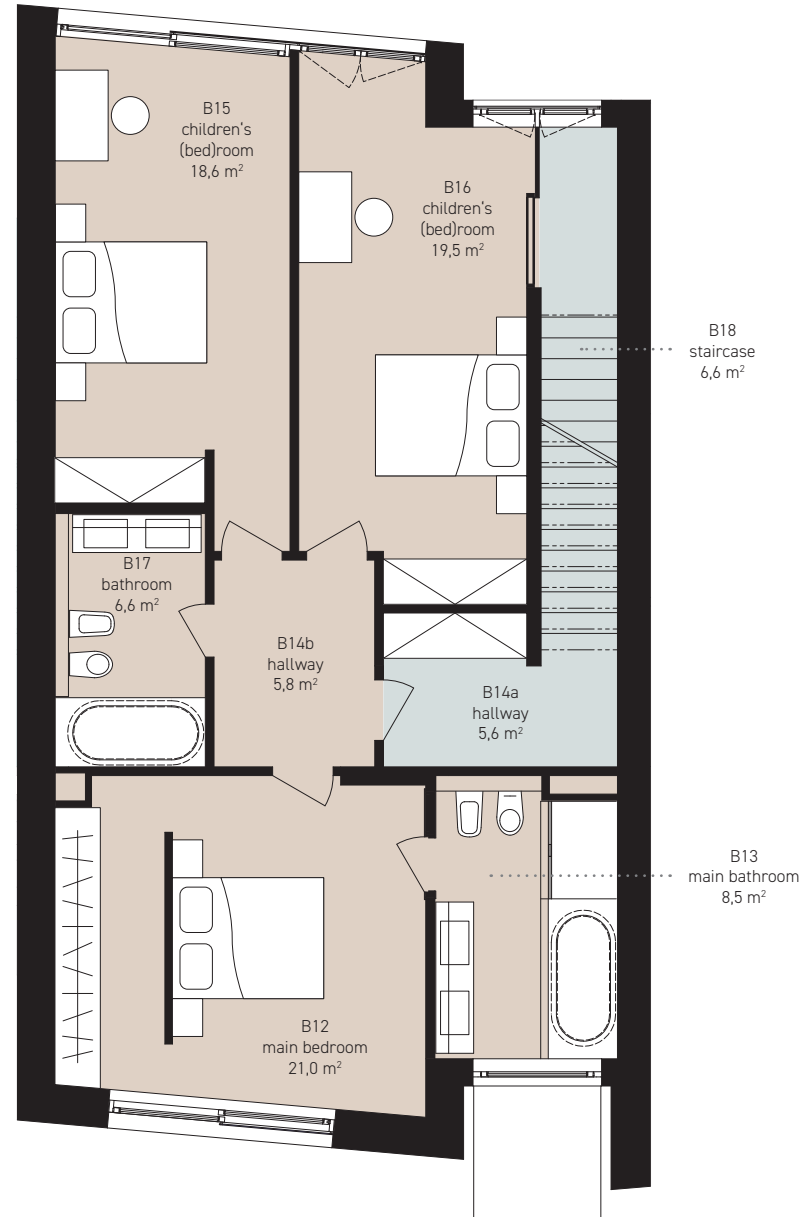
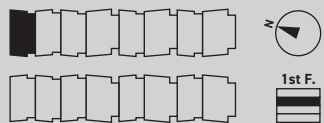
*According to the Czech Government Decree No. 366 of 2013, Article 3 **Including the built-up area.
The data given here bear the character of purely preliminary information.

Any images of furnishing items in the drawings are only illustrative and will not be part of the housing unit, except such items that constitute its integral equipment.



HOUSE TYPE	B1
Total area	347,1 m ²
Garage/parking area	42,8 m ²
Floor area*	304,3 m ²
Usable floor area	285,3 m ²
Accessible terrace floor	73,9 m ²
Land**	275,0 m ²
Number of parking spots	2 ×

1st floor / first floor	92,2 m ²
B12 main bedroom	21,0 m ²
B13 main bathroom	8,5 m ²
B14a hallway	5,6 m ²
B14b hallway	5,8 m ²
B15 children's (bed)room	18,6 m ²
B16 children's (bed)room	19,5 m ²
B17 bathroom	6,6 m ²
B18 staircase	6,6 m ²



*According to the Czech Government Decree No. 366 of 2013, Article 3 **Including the built-up area.
The data given here bear the character of purely preliminary information.

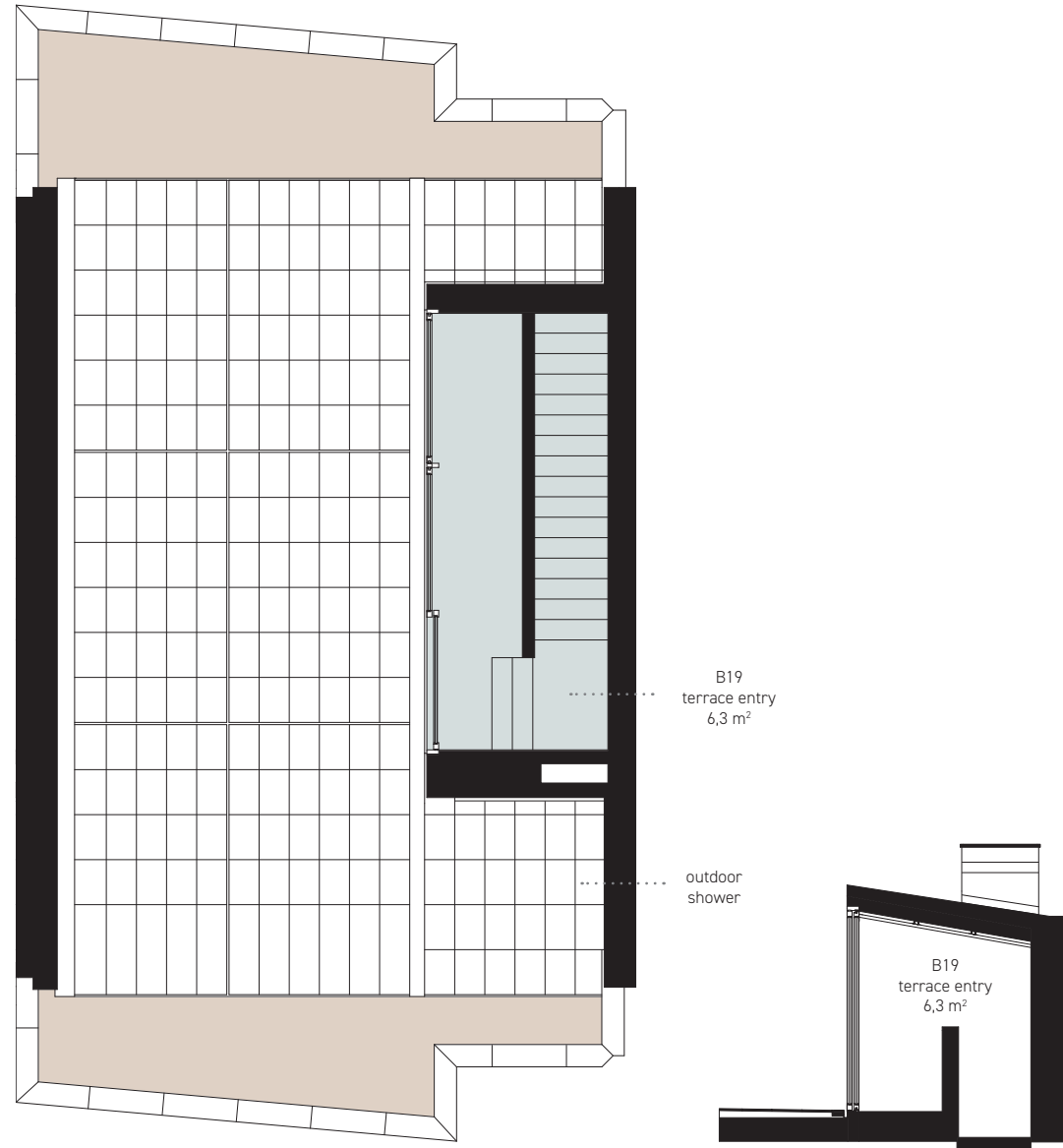
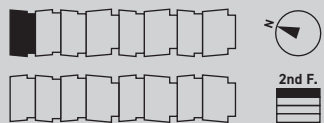
Any images of furnishing items in the drawings are only illustrative and will not be part of the housing unit, except such items that constitute its integral equipment.



HOUSE TYPE	B1
Total area	347,1 m ²
Garage/parking area	42,8 m ²
Floor area*	304,3 m ²
Usable floor area	285,3 m ²
Accessible terrace floor	73,9 m ²
Land**	275,0 m ²
Number of parking spots	2 ×

2nd floor

B19 terrace entry	6,3 m ²
accessible terrace including outdoor shower	53,8 m ²
terrace pebble stone (kačírek)	20,6 m ²
staircase	0,0 m ²



*According to the Czech Government Decree No. 366 of 2013, Article 3 **Including the built-up area.
The data given here bear the character of purely preliminary information.

Any images of furnishing items in the drawings are only illustrative and will not be part of the housing unit, except such items that constitute its integral equipment.